

FAQs

Q Does Fernox Express need to be positioned vertically to discharge the product?

A No, Fernox Express can be used in any position due to the design of the nozzle and adapter.

Q How quickly can Fernox Express dose a system?

A Fernox Express is the most user friendly product available, faster to use than any other technology.

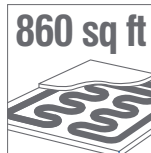
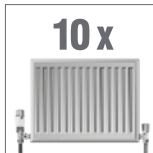
From start to finish it takes only two minutes to connect and disconnect the product and only 30 seconds to dose the system, thanks to the 12-bar non-flammable propellant. Fernox Express is supplied with all accessories necessary to inject into via a radiator, filling loop or any Fernox TF1 Filter.



30 Seconds

Q How many radiators can Fernox Express treat?

A Each Fernox Express treats a 34 gallon system or up to 16 single radiators. It is recommended the system is cool before dosing with Fernox Express. There is no need to draw off water or release system pressure before connecting.



Q How do you dispose of the can after use?

A The contents of all Fernox Express products should be emptied completely before disconnecting from the radiator. The Fernox Express range cans are made of mild steel and are fully recyclable.

Q Do you need to drain down the system to use Fernox Express?

A No, Fernox Express has been designed so you do not need to drain down the system saving time on-site. Fernox Express is ideal for servicing and maintenance contracts.

**THE FERNOX
TF1 FILTER RANGE**



Protector F1 Express

- Stops rust, sludge and scale
- Protects the entire system including the boiler
- Proven market leading inhibitor

Boiler Noise Silencer F2 Express

- Stops boiler noise
- Improves heat transfer efficiency
- Compatible with all Fernox Protectors



Cleaner F3 Express

- Powerful fast acting cleaner
- Remove sludge, limescale, flux residues and other debris
- Non-foaming formulation – quicker to flush from the system



Leak Sealer F4 Express

- Seals small internal leaks – ideal for solving pressure loss.
- Will not causes any blockages
- Effective within 1-24 hours

The professional's choice

FERNOX EXPRESS



Fernox USA, 4100 6th Avenue, Altoona PA 16002
Sales/Technical: 1-814-940-3804 1-814-941-1687
usa@fernox.com

www.fernox.com

FERNOX
MAKES WATER WORK

BENEFITS

Fernox Express range products have been designed to treat a central heating system in just 30 seconds! Quick and easy to use, with no need to drain down the system - saving you time on-site.



Dose a system in just **30 seconds**



Quick and **convenient** to use



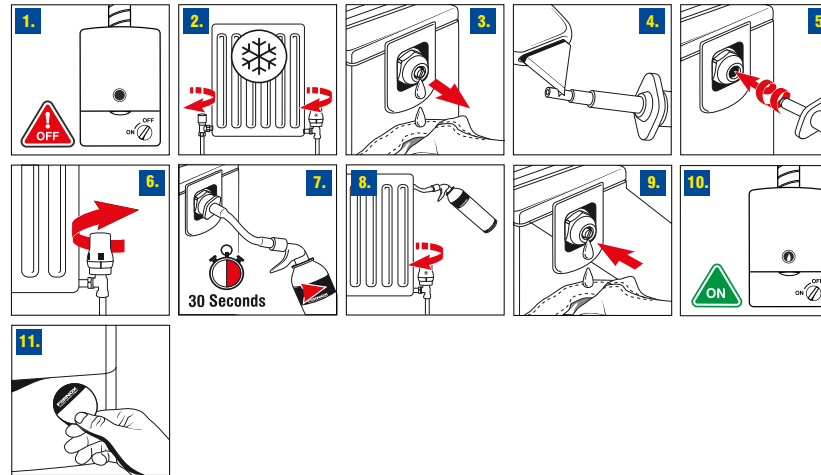
Saves time spent on-site



All dosing adapters included

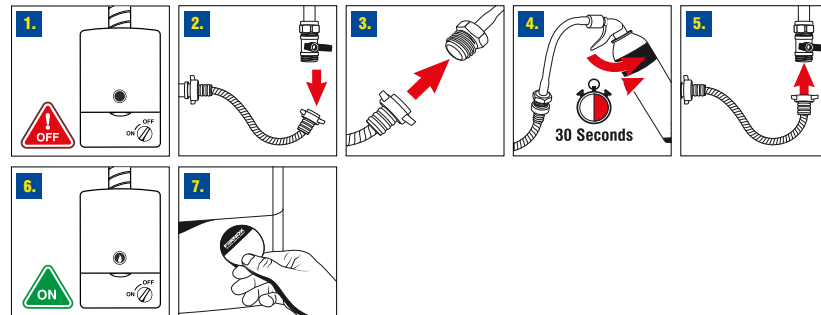


HOW TO USE Injection via a radiator



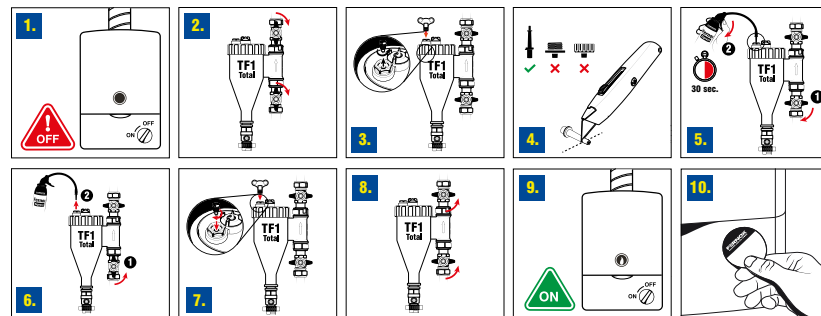
1. Turn off the system and allow radiators to cool.
2. Turn both the lock-shield valve and the wheel-head or the thermostatic valve clockwise until they are completely closed.
3. Hold a cloth underneath the air-vent pin and remove it using a radiator key. A small amount of leakage is normal.
4. The Fernox radiator nozzle will screw into most air vents but may need cutting.
5. Screw the radiator injector nozzle into the air-vent hole by turning clockwise whilst pushing gently.
6. Open the wheel-head valve (or TRV).
7. Inject the Fernox Express into the system by squeezing the trigger until the can feels cold.
8. Close the wheel-head valve (or TRV).
9. Release the pressure in the radiator. Holding a cloth underneath, detach the nozzle from the can and unscrew it from the radiator.
10. Turn the boiler on.
11. Finally, place the treatment reminder sticker on the boiler case.

Injection via existing boiler/filling loop



1. Turn off the system and allow radiators to cool.
2. Disconnect the filling loop from the filling valve.
3. Screw the filling valve adapter nozzle on the filling valve using a suitable connector.
4. Open up the inlet valve on the filling valve and inject Fernox Express into the system by squeezing the trigger until the can feels cold.
5. Close the inlet valve and remove the filling valve adapter nozzle.
6. Turn the system on.
7. Finally, place the treatment reminder sticker on the boiler case.

Injection via a TF1 Total Filter



1. Turn off the system.
2. Close the inlet/outlet valves.
3. Remove the bleed nipple using a radiator key.
4. Cut off the end of the adapter nozzle.
5. Insert the nozzle into the TF1 Total Filter, open the inlet valve and inject Fernox Express into the system by squeezing the trigger until the can feels cold.
6. Close the inlet valve and remove the Express can.
7. Replace the bleed nipple using the radiator key.
8. Open the inlet/outlet valves.
9. Turn the system on.
10. Finally, place the treatment reminder sticker on the boiler case.